

THE NEW CHOICE IN
HIGH VOLUME MAILING

IM6000



Ergonomically engineered for
maximum productivity and output

HASLER
America's better choice.®

HASLER'S IM6000

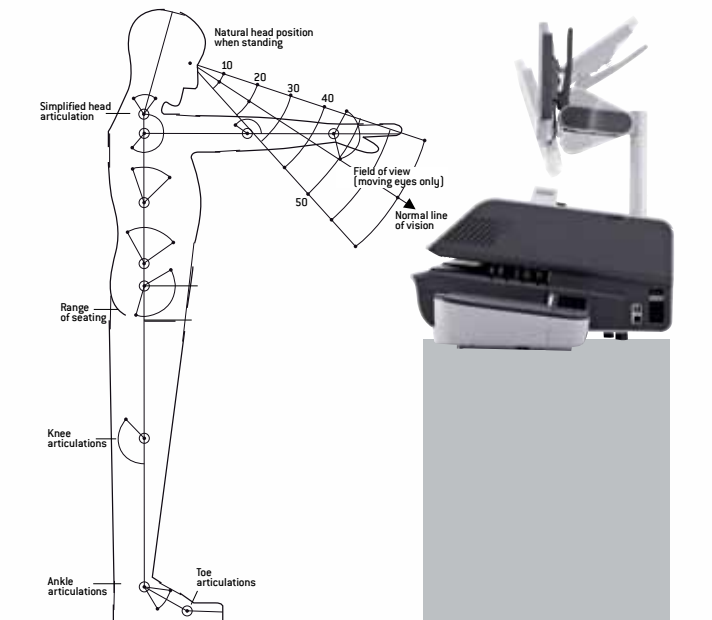
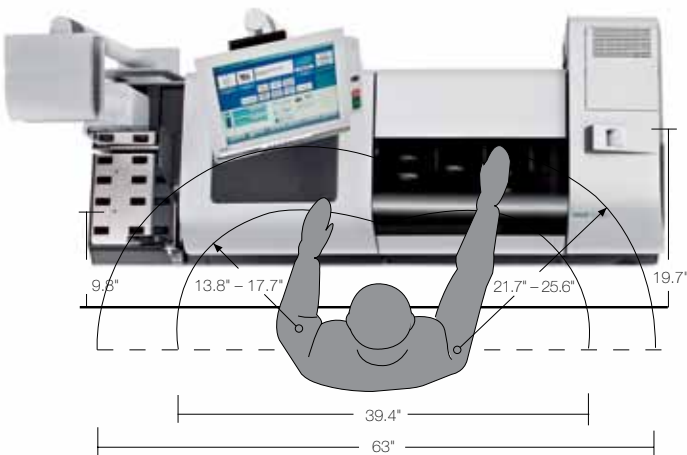
THE NEW CHOICE IN HIGH VOLUME MAILING SYSTEMS

The IM6000 sets a new standard for mailing system productivity, operability and efficiency. Hasler observed high volume mailing machine operators and listened to production mail center customers to design the next generation mailing system. The IM6000 delivers simple, ergonomic operations; investment protection and cost savings; reliable production, and maximum uptime. Coupled with the new internet-connected Hasler iMeter™ postage meter and powerful Apps to manage your business, it is clear that the IM6000 is your new choice in high volume mailing systems.

THE NEW CHOICE THAT OFFERS SIMPLE, ERGONOMIC OPERATIONS

The IM6000 was designed with the operator in mind. At a first glance, you will notice all mailing operations are controlled from the same area, creating an ideal ergonomic workspace. The modular and flexible design of this system allows operators to adjust and place components within an arm's reach, minimizing the range of motion, providing optimal workflow and comfort.

- The height adjustable 15" touch screen moves backward and forward, swivels left and right, and moves up and down, providing a comfortable working environment for all of the operators using this system.
- All screens display large descriptive buttons and prompts, making navigation a breeze. Cool shades of blue minimize eye strain and fatigue. Operators can create rate shortcuts, rate favorites, and customized menu keys, all on the home screen, which help increase operational efficiency.
- The added comfort of a full keyboard makes account or department set up/usage, and custom text messaging on the envelope easy. Processing mail utilizing E-Services is done with ease.
- A dedicated workspace under the screen provides an additional area for sorting and preparing mail.



REMOTE LABEL DISPENSER

When processing large parcels or oversized mail pieces, the Remote Label Dispenser (RLD) is the answer. You can move and place the RLD wherever you need it at anytime, reducing operator movements and creating the highest level of comfort and workflow efficiency.

REMOTE LABEL DISPENSER

Reduce work steps and optimize your ergonomic workspace with a repositionable printer. Prints no-peel, ready-to-stick tapes from a roll.

WEIGHING PLATFORM

10, 30 or 70 lb. platforms handle even the heaviest parcels and over-sized packages. Add differential weighing to reduce manual processing and handling.

MIXED MAIL FEEDER

Eliminate hand sorting by size or weight. Process nested or non-nested envelopes and postcards with ease.

ERGONOMIC WORKSTATION

Designed especially for the IM6000, this ergonomic workstation creates a comfortable workspace. Adjustable shelving is great for holding supplies. Dual locking doors provide additional storage and security.

FULL KEYBOARD

The added comfort of a full, integrated keyboard makes set up and mail processing a breeze.

15" COLOR TOUCH SCREEN

Rotate, swivel and adjust your full color touch screen for optimal viewing, accessibility and comfort. Large, descriptive prompts and buttons make navigation simple.



SEALING SYSTEM

Dual-pump, jet-spray sealing system with filter ensures a quality tip-to-tip envelope seal. Five levels of spray adjustments are standard with each system.

DYNAMIC SCALE

Accurately weighs, rates and classifies mail at speeds up to 140 lpm. Reliable sensors detect mail dimensions to ensure conformance to USPS® Shape-Based Pricing requirements.

POWER CONVEYOR STACKER

Keep the mail flowing to achieve maximum throughput by reducing the number of starts and stops using efficient, high capacity stacking.



THE NEW CHOICE THAT DELIVERS RELIABLE PRODUCTION AND MAXIMUM UPTIME

Let's face it. Business today isn't what it was yesterday. Meeting the demands of your mail processing center can be tough. Whether you are adhering to time critical deadlines or changes in your daily routine, the bottom line is the work must get done. You need a durable and reliable workhorse that is going to deliver. With an overall weight of more than 200 lbs., the IM6000 is always ready for the challenge. Combining best in class ergonomics with a finely engineered machine, the IM6000 has what it takes to maximize throughput including:

- **High Capacity Envelope Feeder** with reload on the fly capability. With a stacking capacity of more than 7", and the ability to add additional items as the machine is running, operators will decrease the number of machine starts and stops, leading to increased productivity.
- **True Mixed Mail Feeding** saves time preparing your mail for processing. No more manual sorting, the IM6000 can handle varying size items up to .8" thickness. Postcards are also handled with ease.
- **Three Speed Choices** up to 210, 260, 300 lpm to tackle the demands of large corporate and production mailing operations.
- **Dynamic Scale** with a patented four-point detection system that rapidly weighs and measures mail in-line and automatically categorizes and rates it in compliance with USPS® regulations.
- **Superior Sealing** capabilities for both open and closed flap envelopes.
- **A Power Conveyor Stacker** that has a storage capacity ratio in sync with the feeder to drive maximum system performance.

THE NEW CHOICE THAT PROVIDES INVESTMENT PROTECTION AND COST SAVINGS

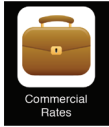
In today's economic environment, watching the bottom line has never been more important. That is why each IM6000 has been built to meet the specific needs of your business. The advanced modular design allows you to configure a system where you only purchase the components, Apps, and options that you need, eliminating overspending.

New ink and printing technology provide maximum return on your investment. Say good-bye to scheduled print head replacement. Each IM6000 comes standard with a print head designed to last the life of the mailing system.



THE NEW CHOICE FOR MANAGING MAILING OPERATIONS AND CONTROLLING COSTS

As part of its revolutionary design, the IM6000 introduces the industry's first Hasler iMeter™ postage meter. The iMeter™ is an internet connected smart device that provides many functions above the traditional postage meter. Simply visit the Hasler iMeter™ Apps Store and choose the right Apps for your business, including:



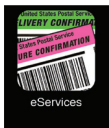
Commercial Rates App provides access to reduced Postal Service™ prices that are approved for use in advanced mailing systems like the IM6000. iMeter™ connectivity and digital imprinting ensure conformance to Postal requirements. USPS® Commercial Base Rate discounts are automatically applied to save you as much as 5% off retail USPS® rates on Express Mail® and Priority Mail®.



Online Postal Expense Manager™ App provides web reporting on postage usage and trends by department, time period, and postal class, which helps with budget planning. Reports can be viewed as graphical snapshots, and all postage usage data can be easily exported into Excel for additional analysis and reporting.



Hasler Postal Accountant App delivers the reports you need to track, analyze, allocate, forecast, and consolidate your mail processing activity. Automatic alerts and budget limits help you monitor costs to prevent overspending. Views and reporting can be done for a single location or an integrated multi-site enterprise.



E-Services with Electronic Return Receipt App provides easy processing, tracking, and reporting of your mail when utilizing USPS® discounted electronic rates for eDelivery Confirmation™, eSignature Confirmation™, and eCertified™ with Electronic Return Receipt from USPS®. In addition to significant cost savings, email alerts and online access save time by helping you monitor, track and control.



Remote Diagnostics App keeps your mailing system connected to our service center. Technicians are able to quickly analyze any issues or concerns you may have, ensuring you sustain maximum uptime. All support is promptly provided by USA-based technicians.

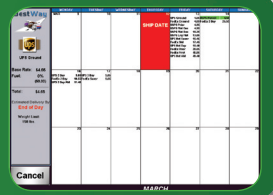


TotalFunds® App provides the flexibility and convenience of funding your iMeter™ with a “download now, pay later” TotalFunds® postage financing plan. Add postage dollars to your iMeter™ with the click of a button. Instead of pre-funding the postage account, you will receive a monthly invoice for actual postage dollars that have been downloaded.



Postal Rates App provides automatic delivery of updates when the Postal Service™ announces a change to its rates, delivery service fees and postal zones. Updates are downloaded quickly with your IM6000 Smart Connect™ high speed LAN connection, and ensure accurate rating of the exact postage for all of your items.

Optional iMCM™ G2 shipping solution can be fully integrated to provide extended mailing functionality and multi-carrier shipping from one centralized workspace. With features like address correction, rate shopping, database integration, desktop shipping, and performance analysis reports, these internet enabled shipping solutions increase productivity, reduce mistakes and costs, and help you manage your mailing and shipping activities in the mail center and across the organization.



THE NEW CHOICE THAT HAS YOU COVERED

For over 80 years, we have been helping companies like yours on a daily basis. You can rely on our expertise and proactive approach to customer service and support to ensure that your mailing and shipping operations run smoothly.



NATIONWIDE NETWORK

Industry best technician to customer ratio from over 200 offices nationwide.



LOCAL CUSTOMER SERVICE

Fast, friendly service is just a phone call away.



OPERATOR TRAINING

Hands on training sessions delivered at your site help maximize employee productivity.



LARGE INSTALLATION MANAGEMENT

From site preparation and equipment delivery to installation and training, Hasler is there to provide a seamless and positive experience.



REMOTE DIAGNOSIS

Provides technicians access to your systems information for quick troubleshooting and support.



ECO-REVOLUTION, ECO-CONSERVATION, ECO-RESPONSIBILITY, ECO-FRIENDLY

Partnering with consumers to protect the environment.

IM6000 SYSTEM REQUIREMENTS

OPERATIONAL EFFICIENCY

- Speed (batch processing): Up to 300 lpm
- Dynamic weighing speed: Up to 140 lpm
- Control panel: 15" color touch screen
- Control panel customization: Yes
- Maximum envelope thickness: .8"
- Internal label dispenser: Yes
- Remote label dispenser: Optional
- Dynamic scale: Optional
- Differential weighing: Optional

MAIL QUALITY & SECURITY

- Advertising slogans: 8 standard
- Personalized text messages: 10 custom
- Postal mail class inscriptions: Automatic
- Sealing system: Dual pump, jet spray
- Sealing adjustments: Five levels
- Print modes: Meter, permit, date stamp

BUDGET OPTIMIZATION

- Account tracking: 100 depts., up to 10,000
- Commercial Rates App: Yes
- Meter indicia: IBI Lite
- Ultra high capacity ink tank: Up to 100,000 imprints
- Account budget creation: Optional

ONLINE MANAGEMENT

- Postal rate change updates: Via download
- Online postage usage reporting: Yes
- Advanced online reporting: Optional
- Track E-Services & eCertified Mail™ App: Optional
- Electronic Return Receipt from USPS® App: Optional
- Low ink email alerts: Yes

PERIPHERALS

- Weighing platforms: 10, 30, or 70 lb.
- USB barcode scanner: Yes
- Report printer: Inkjet
- Inserter connection: Yes
- USB flash drive: Yes

SYSTEM DIMENSIONS (L X D X H)

- Mailing system with catch tray: 58" x 25" x 14"
- Mailing system with dynamic scale and catch tray: 78" x 25" x 14"
- Power conveyor stacker: 40" x 14" x 12"
- Adjustable control panel height: 26" – 33"

HASLER PRODUCTS AND SERVICES

- Mailing Systems
- Postal Scales
- Folders and Inserters
- Address Printers
- Tabbers
- Letter Openers
- Document Management
- Mail Center Management
- Postal Accounting
- Mail Sorting and Tracking
- Service and Supplies
- Leasing Services

For a demonstration or more information, please contact your local Hasler dealer, or email info@haslerinc.com

HASLER | 800.995.2035
www.haslerinc.com

Hasler's network of independent dealers provides sales, service, and support throughout North America.

Hasler™ and America's better choice® are trademarks. All other company and product names may be trademarks and are the property of their respective owners.

All information in this document, including descriptions of features, functions, performance and specifications is subject to change without written notice at any time.

USPS®, Postal Service™, Express Mail®, Priority Mail®, eDelivery Confirmation™, eSignature Confirmation™ and eCertified Mail™ are among the many trademarks of the US Postal Service.



©2010 Neopost USA Inc. All Rights Reserved.
H035 6/10
30M



EAGLE Registrations Inc.
SERVICE • INTEGRITY • VALUE
ISO 14001 and OHSAS 18001
Registered by EAGLE Registrations Inc.